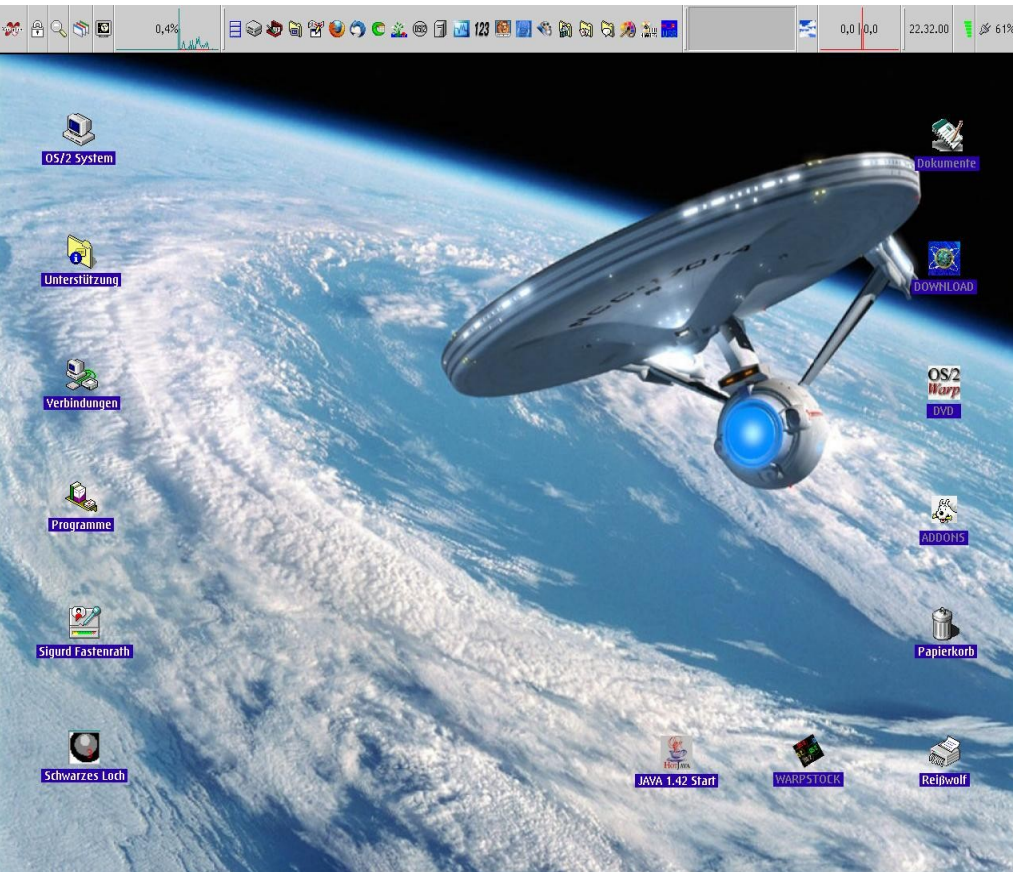




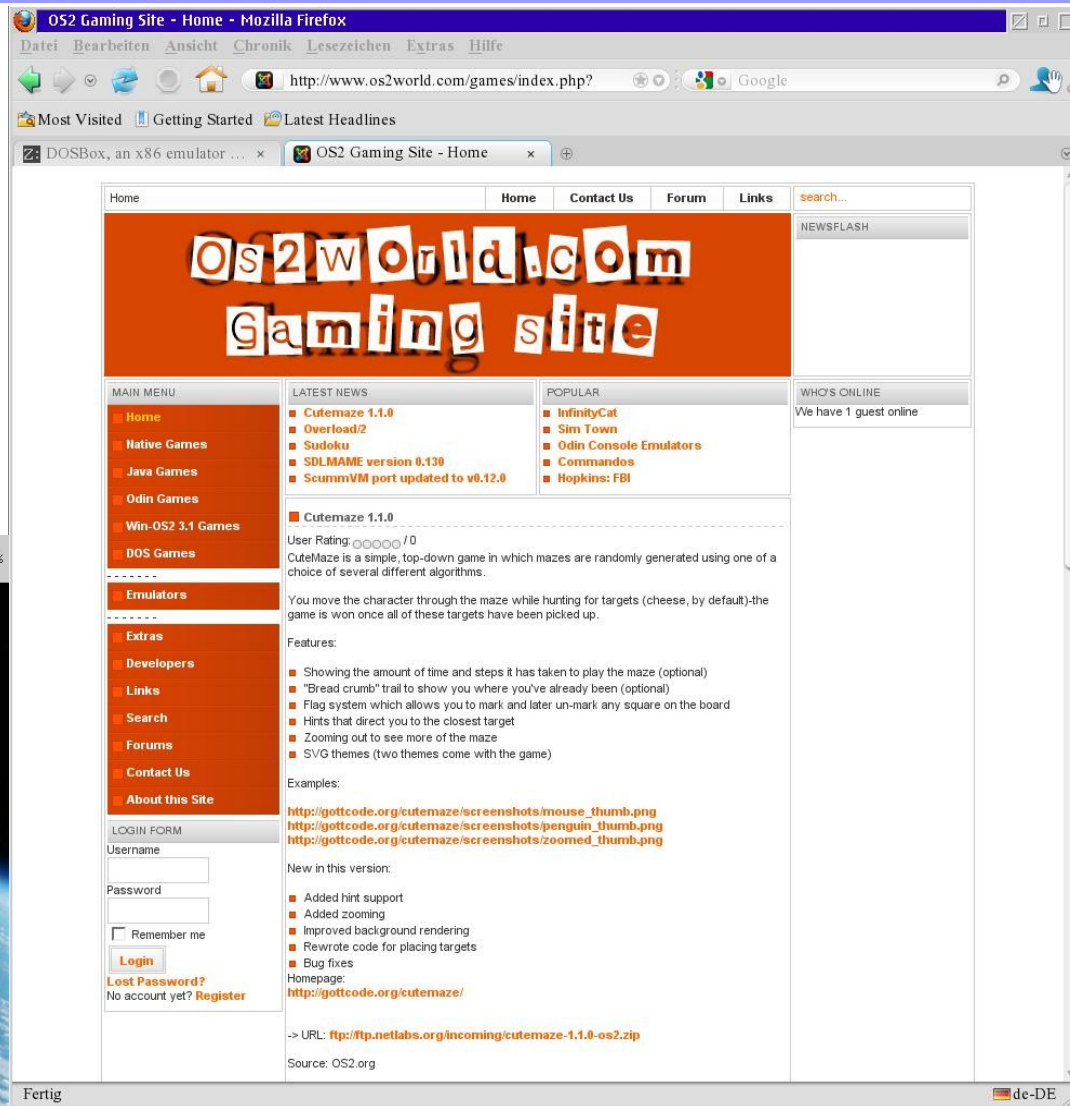
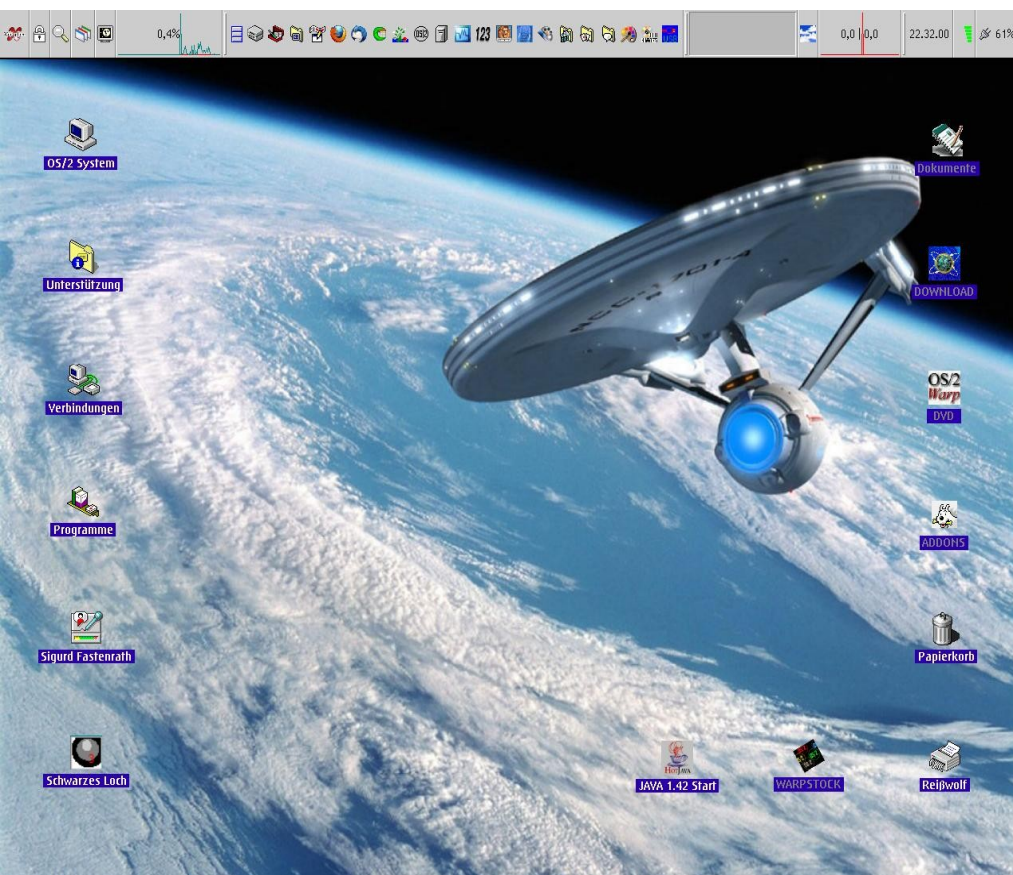
2010

Fun & Games with OS/2 & eCS
© Sigurd Fastenrath

To boldly go, where....



To boldly go,
where....



...the games are... 😊

Intention:

Do see this presentation as an appetizer, please. It is not possible to include each and every variety of possible ways to play games with OS/2 or eComStation.
(Fortunately ☺).

The screenshot displays a classic OS/2 desktop environment with several overlapping windows:

- OS/2 Spiele - Symbolanzeige:** A file manager window showing a directory of games. The main pane lists folders like "Atari für OS/2", "DOSBOX Spiele", "Harfe", "Mahjongg", "OS/2 Spiele", and "OS/2-Schach". The right pane shows icons for "Qt4 Spiele", "ScummVM Spiele", and "WIN-OS/2 Spiele".
- Blubbels:** A game window titled "Blubbels 0.9". It features a grid of colorful spheres. A smaller window titled "Über Blubbels" is open over it, providing information about the game as a "Jawbreaker™-Klon in Qt 4" and a link to the sourceforge project page.
- DOSBox 0.72:** A terminal window showing the execution of DOSBox commands. The output includes:


```
Z:\>SET BLASTER=A220 I7 D1 H5 T6
Z:\>SET ULTRASND=240,3,3,5,5
Z:\>SET ULTRADIR=C:\ULTRASND
Z:\>mount c f:\programme\dosbox\laufwerke\c
Drive C is mounted as local directory f:\programme\dosbox\laufwerke\c
Z:\>mount d f:\programme\dosbox\laufwerke\d
Drive D is mounted as local directory f:\programme\dosbox\laufwerke\d
Z:\>c:
C:\>keyb.exe gr
KEYB 2.0 (pre1): keyboard driver for FreeDOS (?/: more info)
Using: C:\GR.KL [437] (3)
Using an enhanced AT keyboard.
C:\>
```
- ScummVM 0.13.1:** A window showing the ScummVM interface. It lists installed games: "Broken Sword 1: The Shadow of the Templars", "Broken Sword 2: The Smoking Mirror", and "The Curse of Monkey Island (Windows/German)". A sidebar on the right contains buttons for "Start", "Load", "Add Game", "Edit Game", "Remove Game", "Options", "About", and "Quit".
- Programm-Manager:** A window showing a directory tree with folders like "Maxis", "Dark Seed II", "Microsoft Office", "Accessories", and "Corel 4".

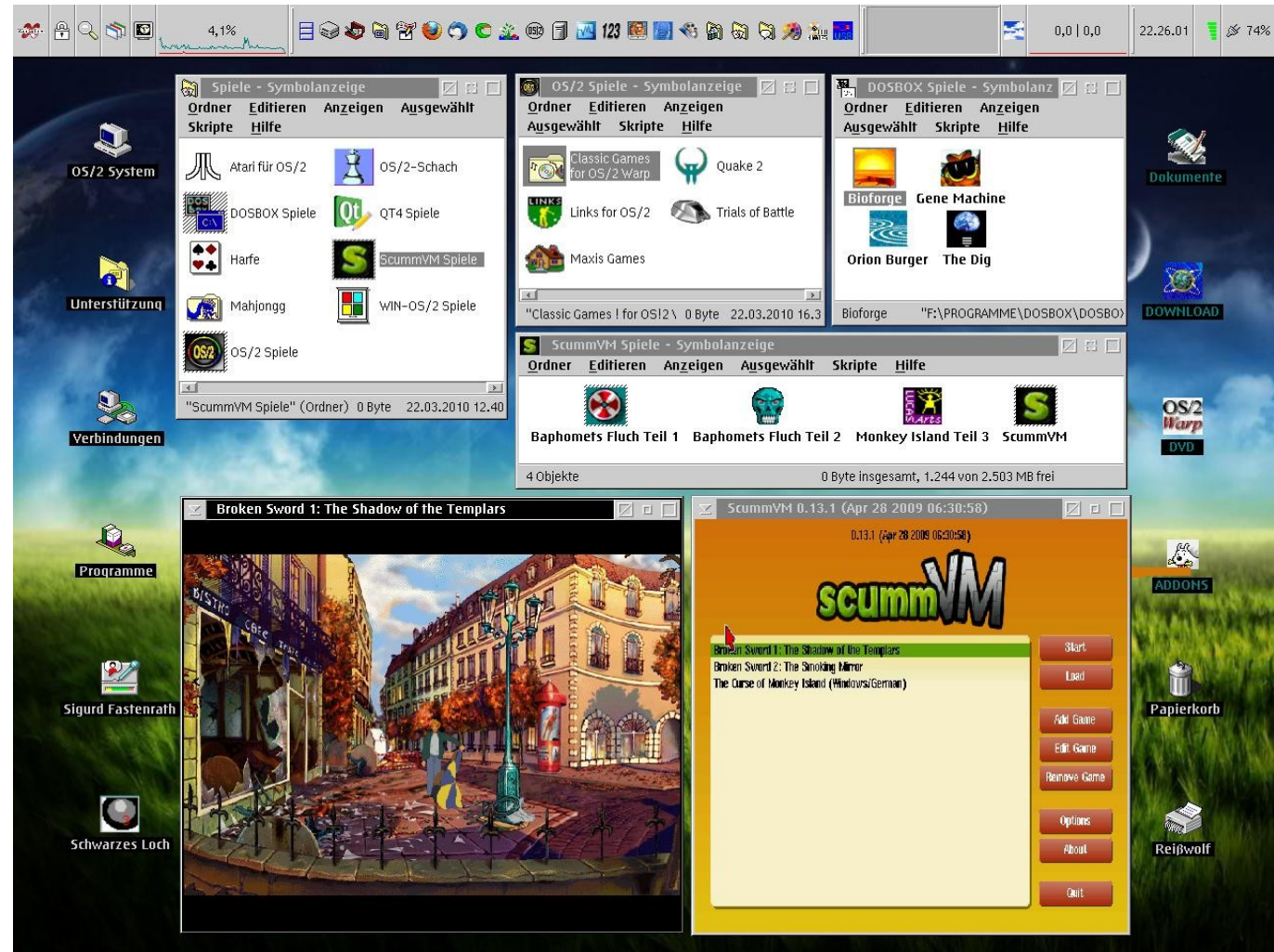
What's here:

- Who am I?



What's here:

- Who am I?
- Overview



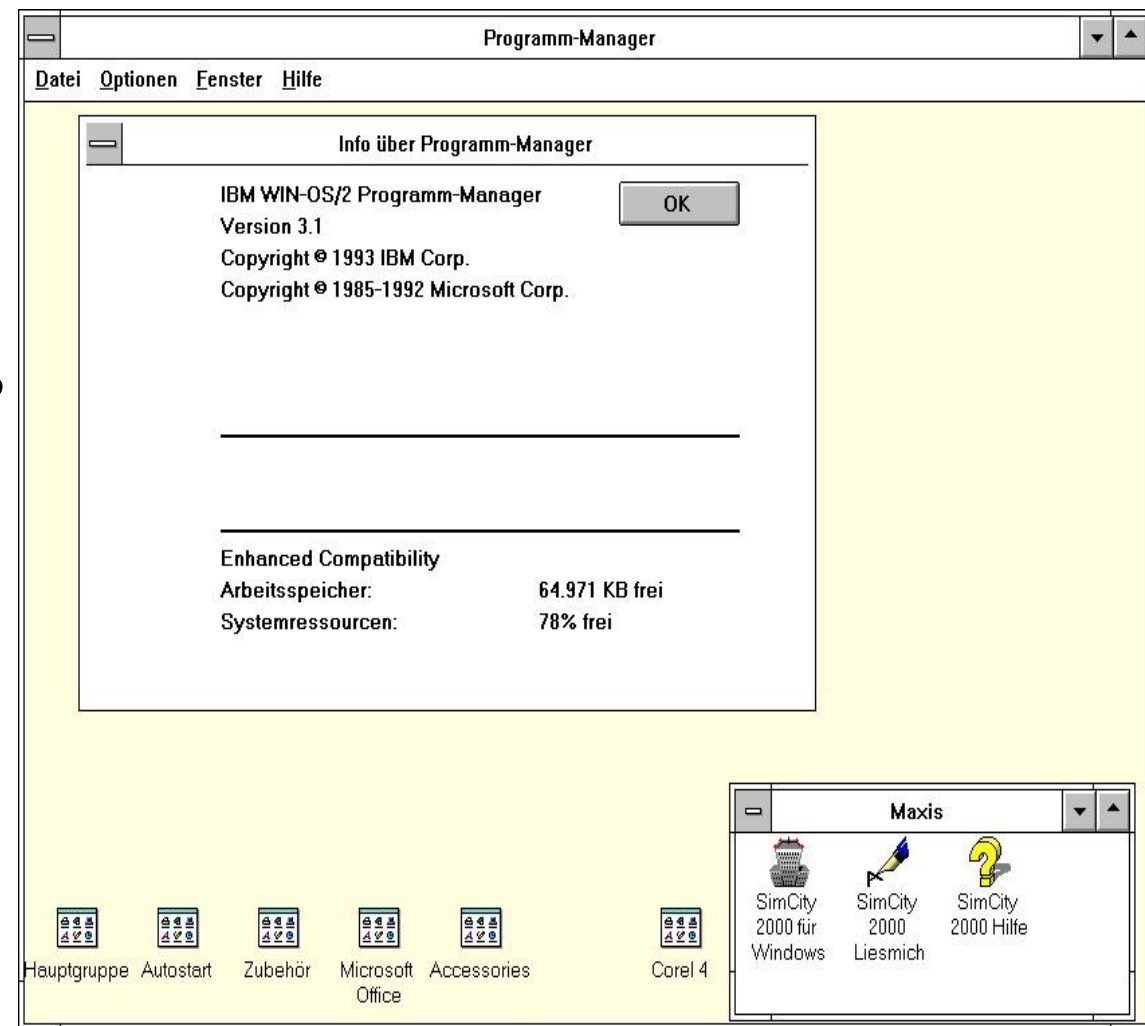
What's here:

- Who am I?
- Overview
- **DOS Native Games**



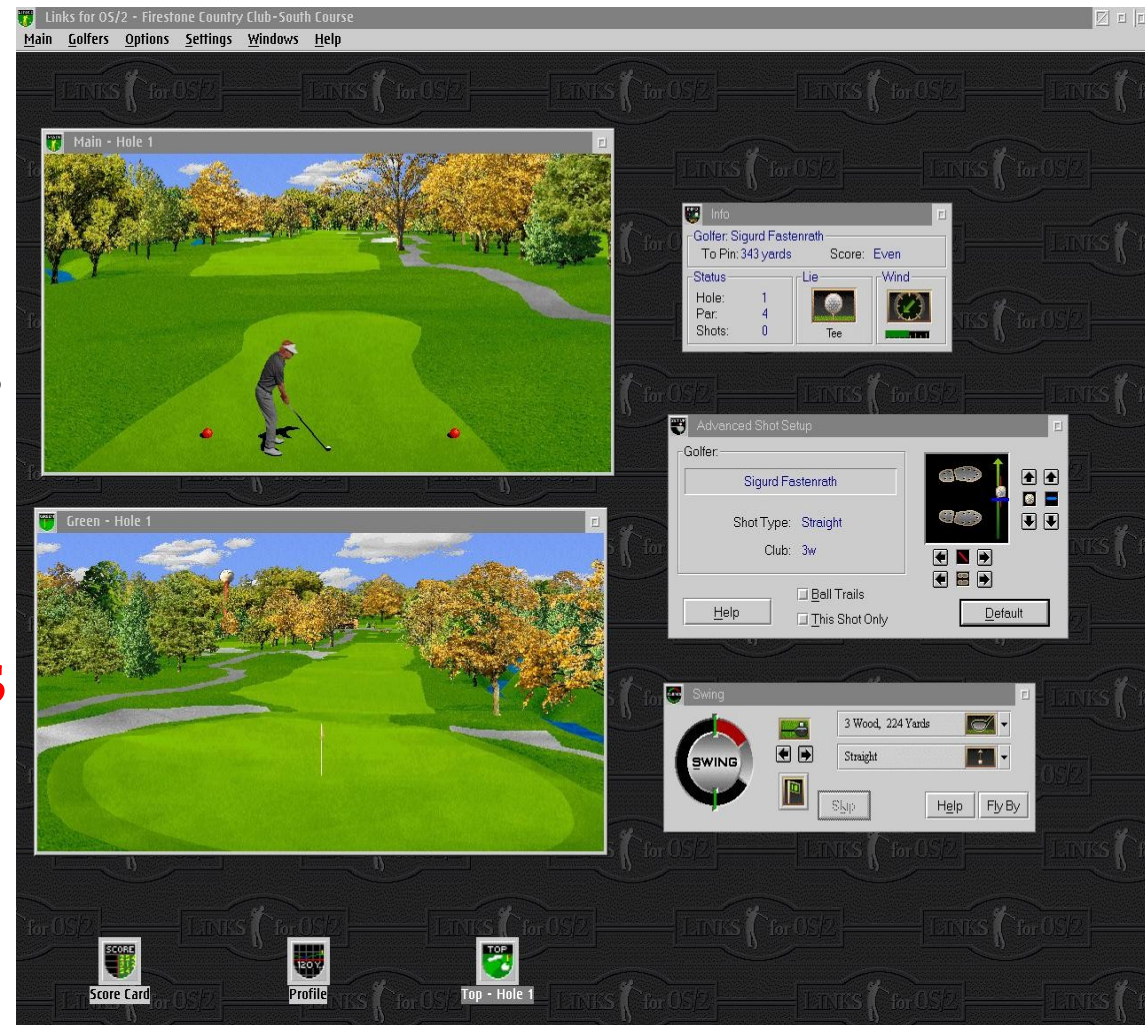
What's here:

- Who am I?
- Overview
- DOS Native Games
- **WIN-OS/2 Games**



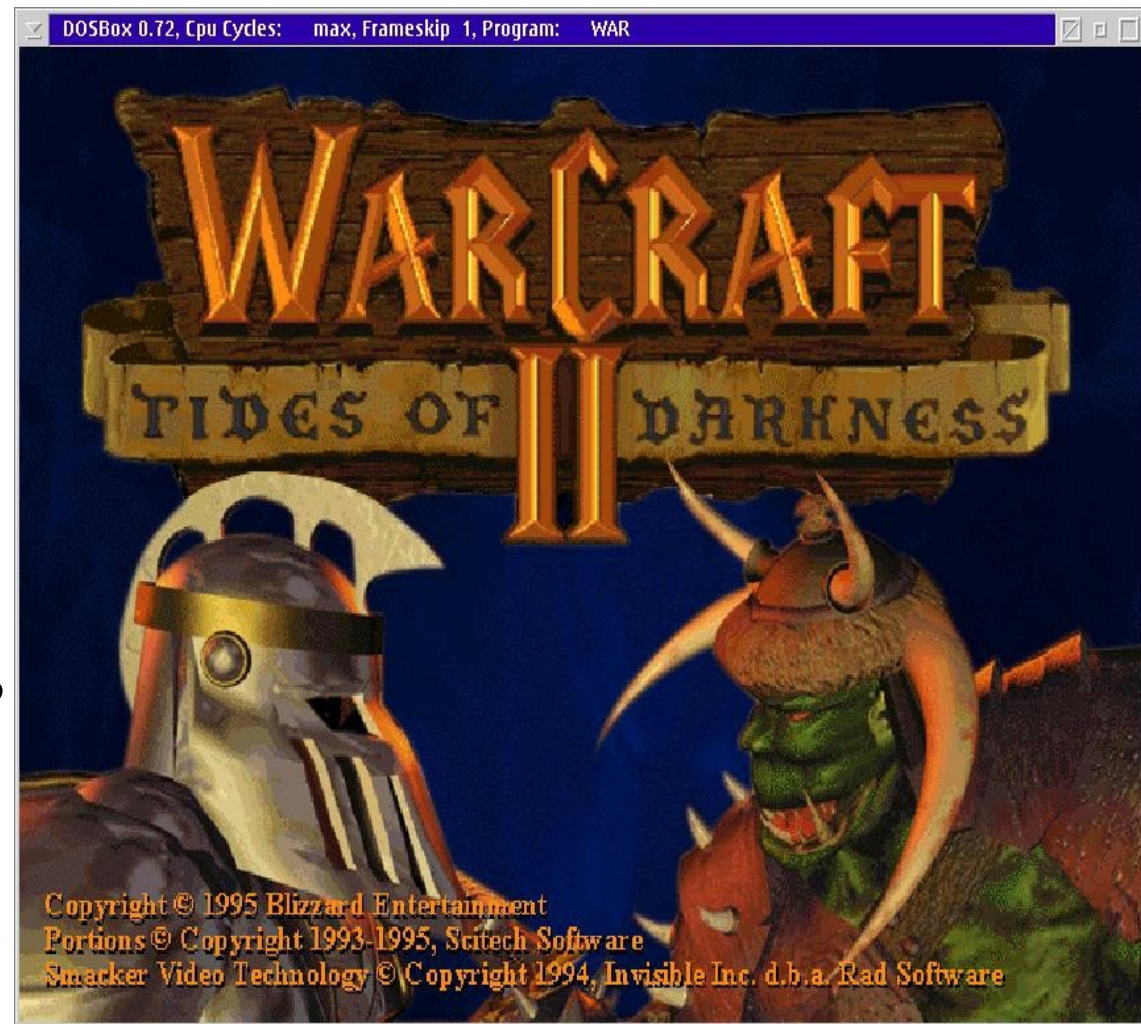
What's here:

- Who am I?
- Overview
- DOS Native Games
- WIN-OS/2 Games
- OS/2 Native Games



What's here:

- Who am I?
- Overview
- DOS Native Games
- WIN-OS/2 Games
- OS/2 Native Games
- **DOSBOX**



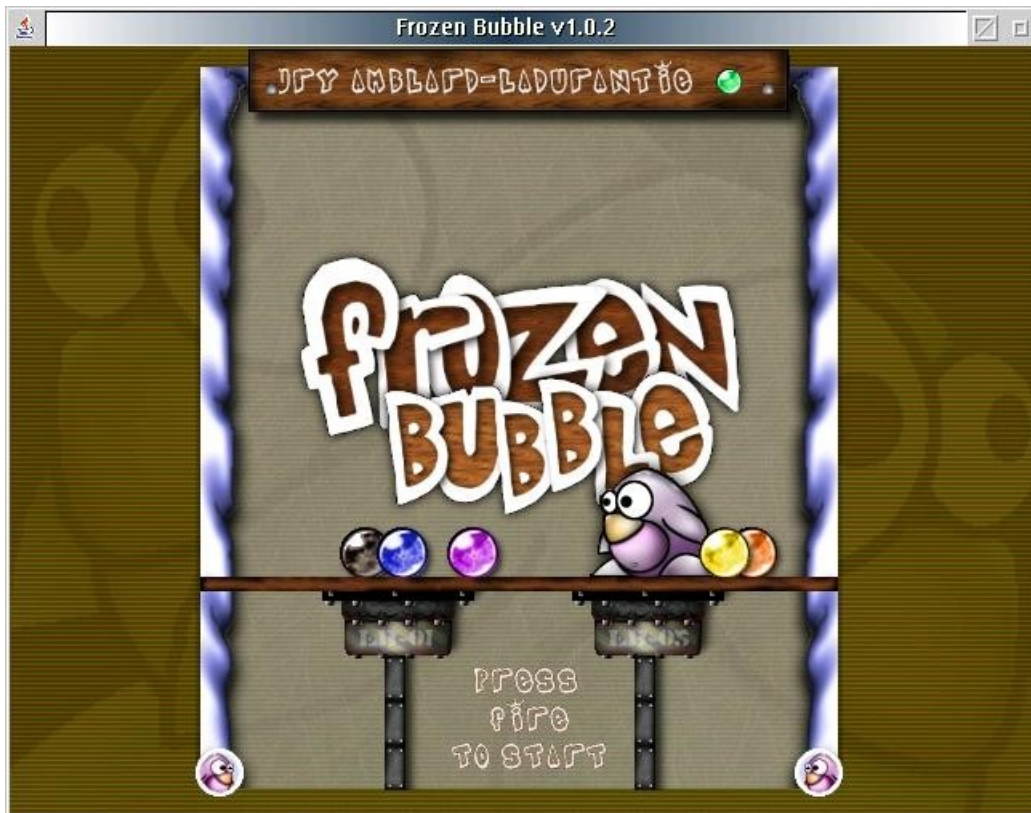
What's here:

- Who am I?
- Overview
- DOS Native Games
- WIN-OS/2 Games
- OS/2 Native Games
- DOSBOX
- **ScummVM**



What's here:

- JAVA Games

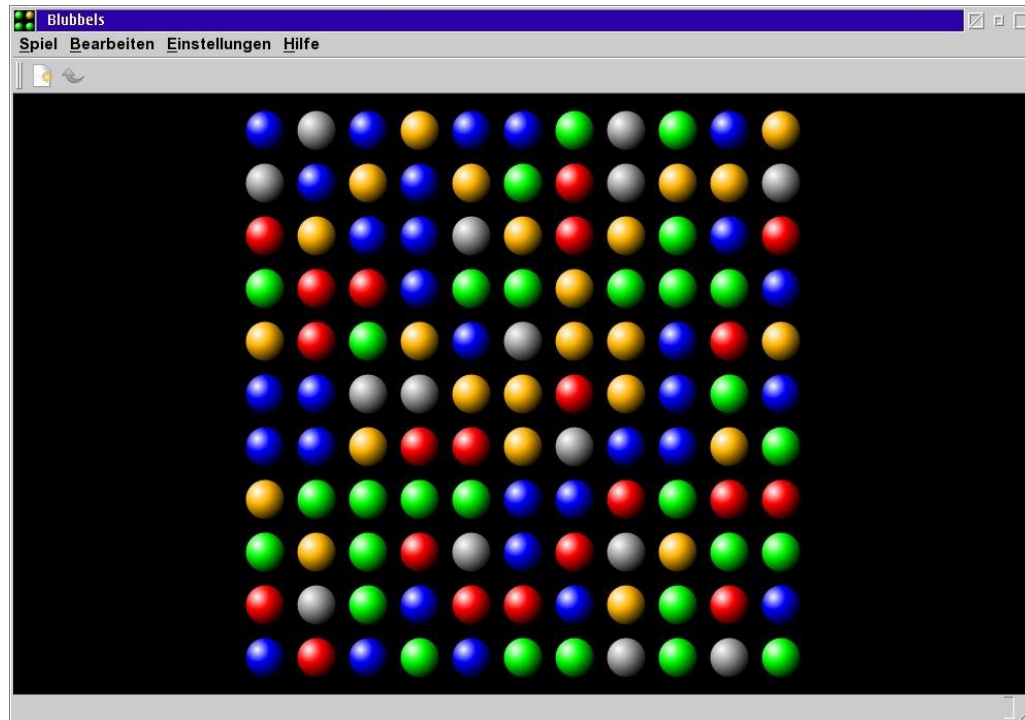


What's here:

- JAVA Games
- ONLINE Games



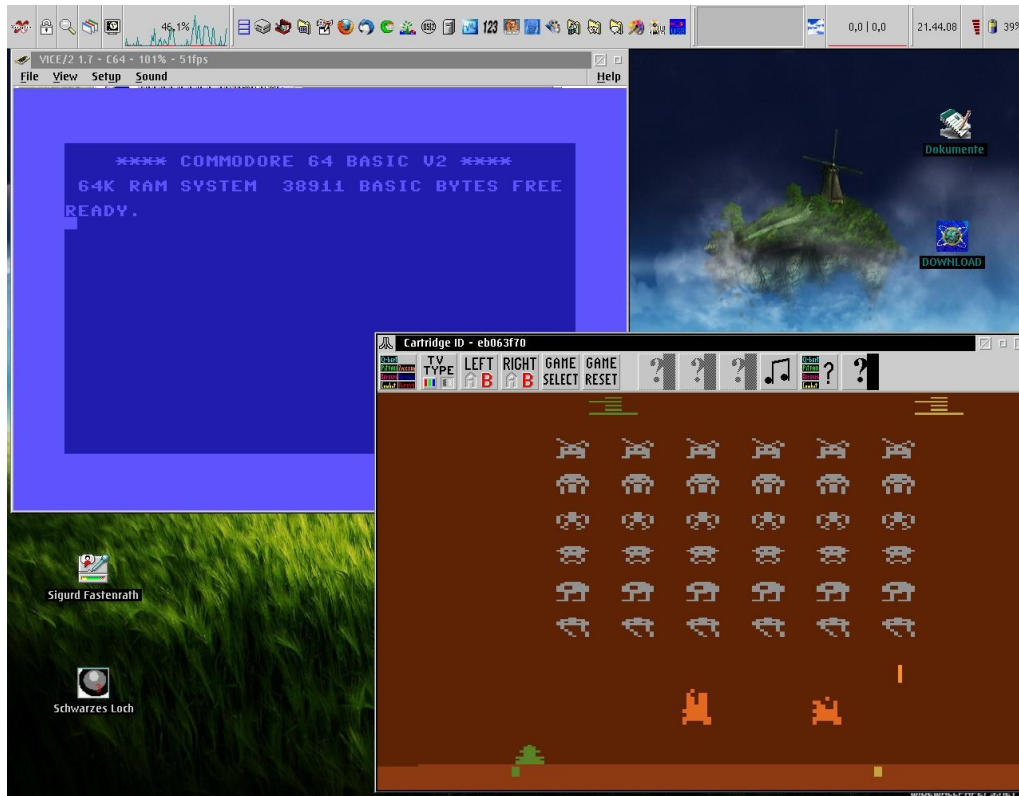
What's here:



- JAVA Games
- ONLINE Games
- QT4 Games

What's here:

- JAVA Games
- ONLINE Games
- QT4 Games
- **Some more....**



Who am I?

- Married
- 3 Sons
- Freelance tax consultant
- Using **OS/2 Warp** since 1995
- OS/2 is hobby
- Special Interest OS/2:
 - Modern hardware – especially netbooks (See WSE 2008)
 - Update CD (See WSE 2009)
 - OS/2 Games (See WSE 2010)
 - Virtualisation
 - Videos (see Youtube)

DOS Native Games

- Contra:
 - Sound Driver (Uniaud)
 - Dos Emulation not always possible / usefull
 - Multicore Systems do sometimes cause problems
 - DPMI support
- Pro:
 - -
- Tip: DOSBOX
- Links:
 - <http://www.bestoldgames.net/eng/abc/b.php>
(Site with a lot of old DOS Games)
 - <http://www.os2world.com/games/>
(Tips for DOS – and more games)
 - <http://www.classicdosgames.com/>
(The whole DOS Games world..)

WIN-OS/2 Games

- Contra: (see DOS)
 - Sound Driver (Uniaud – but: Universal WinOS/2 version for uniaud available)
 - DOS - WINOS/2
Emulation not always possible / usefull
 - Multicore Systems
 - Video support (sometimes special video codecs needed)
 - DPMI support
- Pro:
 - -
- Tip: ?
- Links:
 - <http://wiki.oldsos.org/Downloads/Windows3x>
(Site with Downloads and Tuningtips for Windows 3.1)
 - <http://www.os2world.com/games/>
(Tips for WIN-OS/2 – and a lot of other games)

OS/2 Native Games

- Contra:
 - Most games „outdated“ - no new games
 - Usually „only“ english
 - Multicore Systems
 - Difficult to buy (i.e.: Hobkins FBI)
- Pro:
 - System Integration (Stardock i.e.)
 - ➔ Tip: Try it ;-)
- Links:
 - <http://www.os2world.com/games/> (All Games, all Infos)

DOSBOX

- Pro:

- Emulates whole PC
- Including sound support! (do not depend on OS/2 sound!)
- A lot of configuration options
- Almost each and any DOS Game supported
- „Real“ Windows 3.11 support
- No need of DOS or WIN-OS/2 support in OS/2
- All DPMI versions supported (Protected mode)!

- Contra:

- SDL Application: PANORAMA VESA Driver – wrong colours ➔ Solution: use 64K colours or SNAP

- Links:

- <http://www.joschs-robotics.de/dosbox/>
(OS/2 Port: Details and Download)
- http://www.dosbox.com/comp_list.php?letter=a
(List of supported Games, Tips and Hints)

- ➔ Tip: Try it!

ScummVM

• Pro:

- Superb Emulation
- Including sound support! (do not depend on OS/2 sound!)
- Including different video format support (i.e.: Broken Sword)
- Two or more games simultaneously
- Full mouse integration in windowed mode (mouse is not caught by the ScummVM-windows)
- Easy use – full documentation

• Contra:

- SDL Application: PANORAMA VESA Driver – wrong colours ➔ Solution: use 64K colours or SNAP
- Limited Games
- OS/2 Port one year old

• Links:

- <http://os2ports.smedley.info/index.php?page=scummvm>
(OS/2 Port: Details and Download)
- <http://www.scummvm.org/> Homepage
- <http://www.scummvm.org/compatibility/> (List of supported Games)

JAVA Games

- Pro:

- A lot of games
- Including sound support (no special drivers needed – not always)
- Moderat Hardware required
- Plattform independent

- Contra:

- JAVA enviroment outdated (1.42)
- Not easy to configure

- Links:

- <http://www.play.de/java-games.html>
(Playing JAVA Games Online)
- <http://www.os2world.com/java/> (The OS/2 Java Corner - List of supported Games, Tips and Hints)

ONLINE Games

- Contra:

- FLASH support required with a lot of games
- JAVA support outdated
- Sound support
- A lot of ONLINE Games require a Windows based client program (i.e. World of Warcraft)
- Direct X

- Pro:

- Really: a lot of Games :-)
- Easy to use

- Links:

- <http://www.browsergamer.de/> (one site to start with)
- Just search the net (Google, Bing what ever you want and you will find)

QT4 Games

- Pro:

- All games are free
- Easy to use
- Applications up to date for QT

- Contra:

- -

- Links:

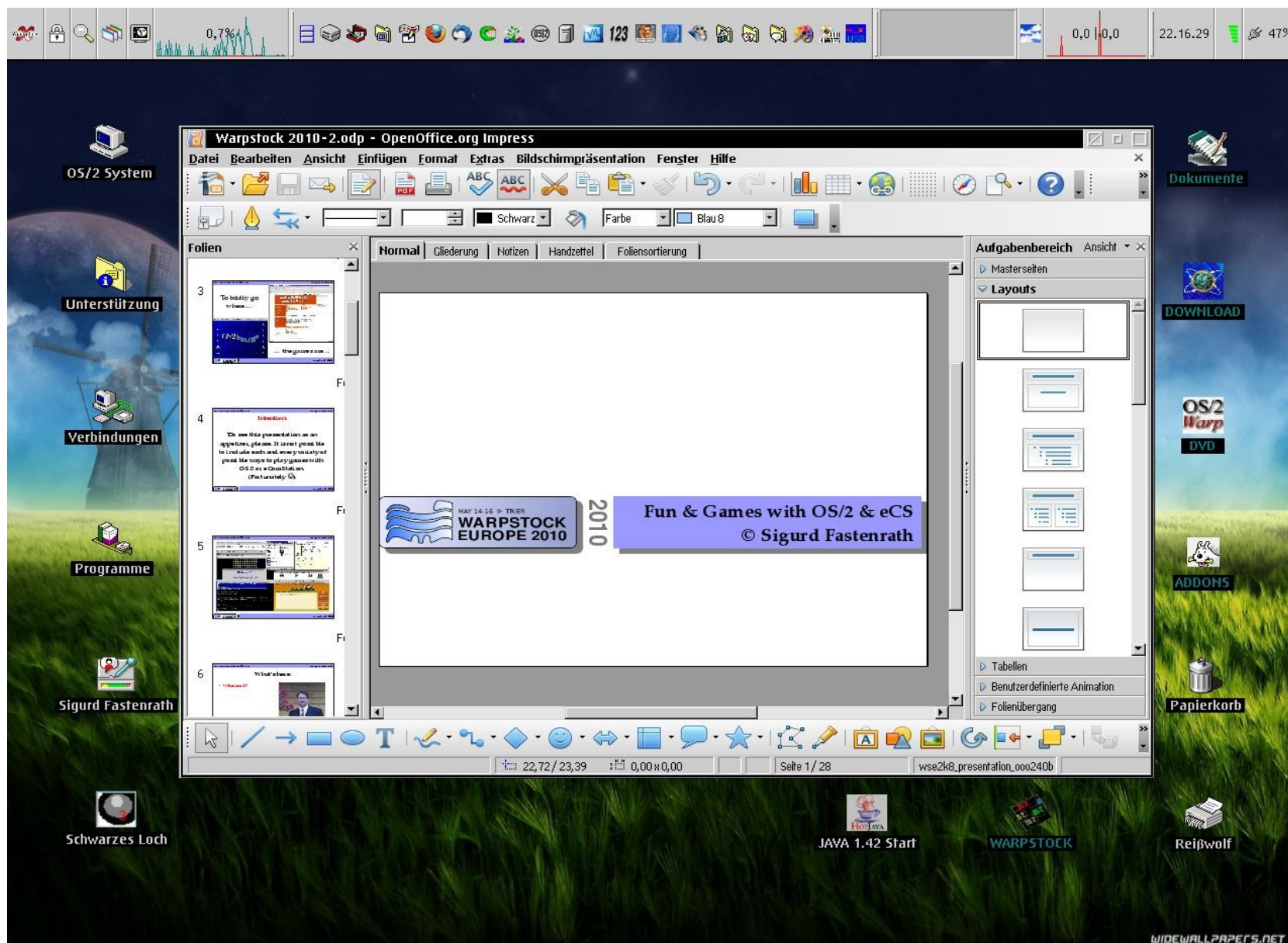
- <http://svn.netlabs.org/qt4>
(Project Port site, informations and download of the environment)
- <http://svn.netlabs.org/qtapps/>
(already ported games and other applications)

Some more...

- More Emulators:

- Commodore C64 Emulator (C128... etc.) <http://www.viceteam.org/>
- Mame Emulator (Gameboy... etc.) <http://emuos2.netlabs.org/en/site/index.xml>
- Stella Emulator (Atari C2600) <http://os2ports.smedley.info/index.php?page=stella>
- Unix/SDL Ports(P. Smedley) <http://os2ports.smedley.info/index.php?page=games>
- Use Virtual PC or Virtualbox for OS/2 to start programs inside other Operating Systems....
- Your choice, suggestion?
- ☺

Released thru...



**Thanks for your patience and
attention!**

Keep using OS/2 & eComstation!